

A *New* Chapter In *il Bayou*
SAHL HASHEESH

Whispers of *Nature*

AMBER

SAHL HASHEESH



COMMITTED
TO YOU



OF LISTENING TO WHAT A CLIENT NEEDS

At TLD, our mission transcends beyond building structures; we are passionate about creating homes and memories. Each project is a labor of love, designed to evoke warmth and security. For three decades, we've been dedicated to crafting exceptional real estate experiences and embracing international standards of modern living.

Driven by our commitment to our clients, we aim to build legacies for generations to come, fueled by innovation that redefines the landscape of real estate.

About *il* BAYOU

SAHL HASHEESH

il Bayou is a fully serviced compound at Sahl Hasheesh, Red Sea, with a divine, calm, and serene nature that calls for meditation and a state of complete tranquility.

With the success of il Bayou igniting our passion, we were driven by our passion to this enchanting project to expand it and introduce il Bayou extension—an ode to seaside living at its finest.

At the new extension, we're excited to bring you even closer to nature. A space designed to awaken your senses and offer moments of pure relaxation. It's a haven where you can escape the daily grind, find peace, and truly enjoy life's simple pleasures with the beach only 350 meters away.

A truly dynamic and a unique getaway experience by the sensational Red Sea, that TLD will continue to evolve and grow into.

Location

Old Town Sahl Hasheesh



Comfortable walking
distance to beach



6 Min drive to
Sawari Marina



9 Min drive to the
Old Town



15 Min drive to
The Airport

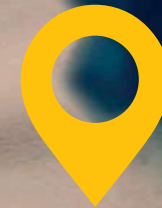


35 Min drive to
Hurghada City center



45 Min drive to
El Gouna

il BAYOU
SAHL HASHEESH



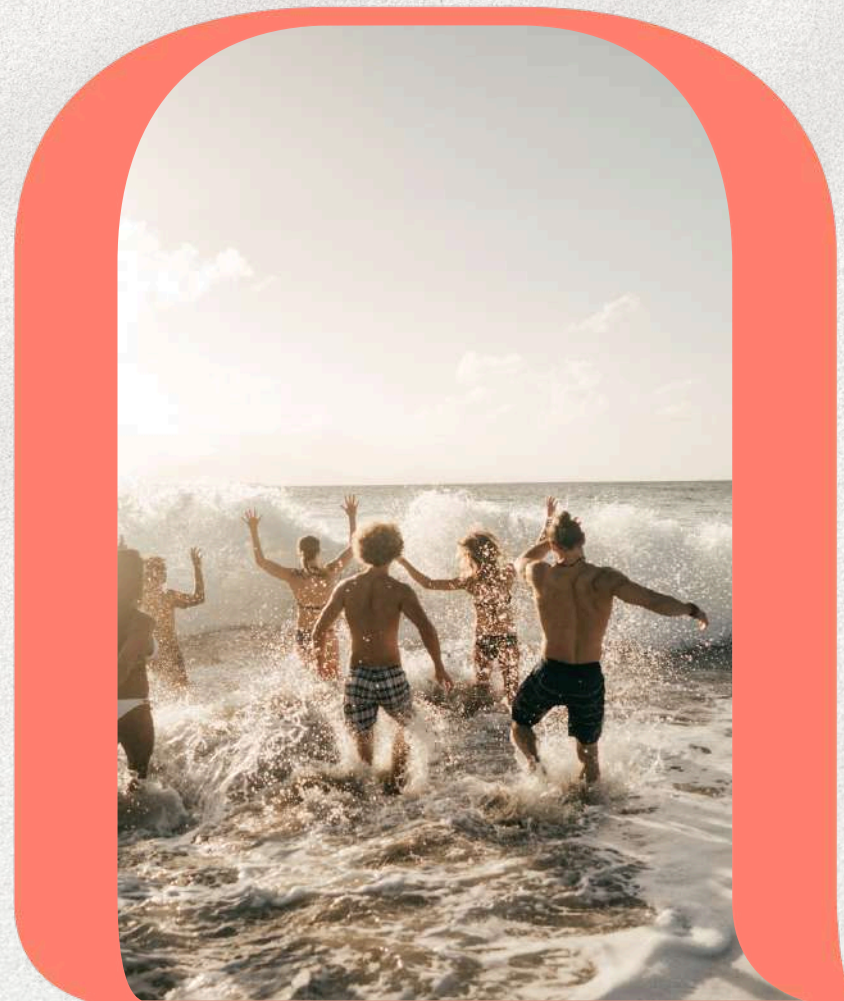
Sawari Marina



il BAYOU *New Story*

SAHL HASHEESH

Divided into five distinct zones, each area boasts its own unique character and color palette, creating a vibrant tapestry of diversity within the development. Just as colors evoke different emotions and energies, each phase of il Bayou embodies the spirit and the energy of its assigned color.



Chapter 1

Laguna embodies a gentle, sandy yellow hue, bridging the gap between the tranquil world and the splendor of nature. It invites residents to bask in the simple pleasures of lagoon pools with sandy shores, where the caress of gentle waves promises relaxation and bliss.



Chapter 2

Jade is a rich, deep green with a touch of blue, evoking a serene and peaceful atmosphere. It mirrors the lush landscapes of Bali, offering recreational zones designed for rejuvenation. Here, residents can find their inner peace through yoga, surrounded by soothing blue tones that enhance the sense of tranquility.





Chapter 3

Amber radiates a warm, golden-orange glow, infusing the environment with vibrant energy and liveliness. It draws residents into a dynamic atmosphere, complete with a communal pool and a plethora of spirited activities that foster a sense of community and joy.

Chapter 4

Sage is a soft, muted earthy green Sage is meticulously tailored to meet the needs of seniors, providing a sanctuary of comfort and care to ensure a fulfilling and enriching experience.



Chapter 5

Capri is a vibrant, deep shade of sky-blue Capri phase unveils villas adorned with infinity pools reflecting the serene blue skies, offering a retreat immersed in calmness and peace.



Amenities





**Year-Round
Destination**

L35
architects

**Designed By
"L35 Madrid"**



**Serviced
Units**



**Fully Finished Villas
With Private Pools**



Elder-Friendly



Kids Area



**Laundry Service
& Housekeeping**



**First Direct
Beach Access**



**Best Jetty In
Sahl Hasheesh**



Large Pool



Pool-Side Cafes



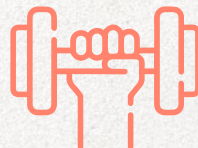
Yoga Area



**Water Features
And Lagoons**



Lush Landscape



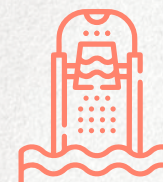
Gym & Spa



**Selective
Community**



Rooftop Cafe



Splash Pads

About Sahl Hasheesh

Nestled within an extraordinary natural landscape, Sahl Hasheesh, known as **the jewel** of the Red Sea, stands as an enchanting gem along the Egyptian coast.

il Bayou is a heartfelt connection to nature. Every detail harmonizes with the surroundings, creating a sanctuary of beauty and community. Here, residents don't just live—they thrive, inspired by the landscape and united by a sense of **belonging to nature**.



Sahl Hasheesh *Lifestyle*

Discover the Paradise of Sahl Hasheesh

With 12 kilometers of crystal-clear waters, it boasts the Red Sea's longest private beach. Encounter diverse marine life, thriving in protected waters. With a landscape encompassing coral, sandy, rocky, and tidal pool beaches, Sahl Hasheesh offers a coastal paradise waiting to be explored. Join us at il Bayou and immerse yourself in nature's breathtaking splendor.



Sahl Hasheesh *Tidal Pools*

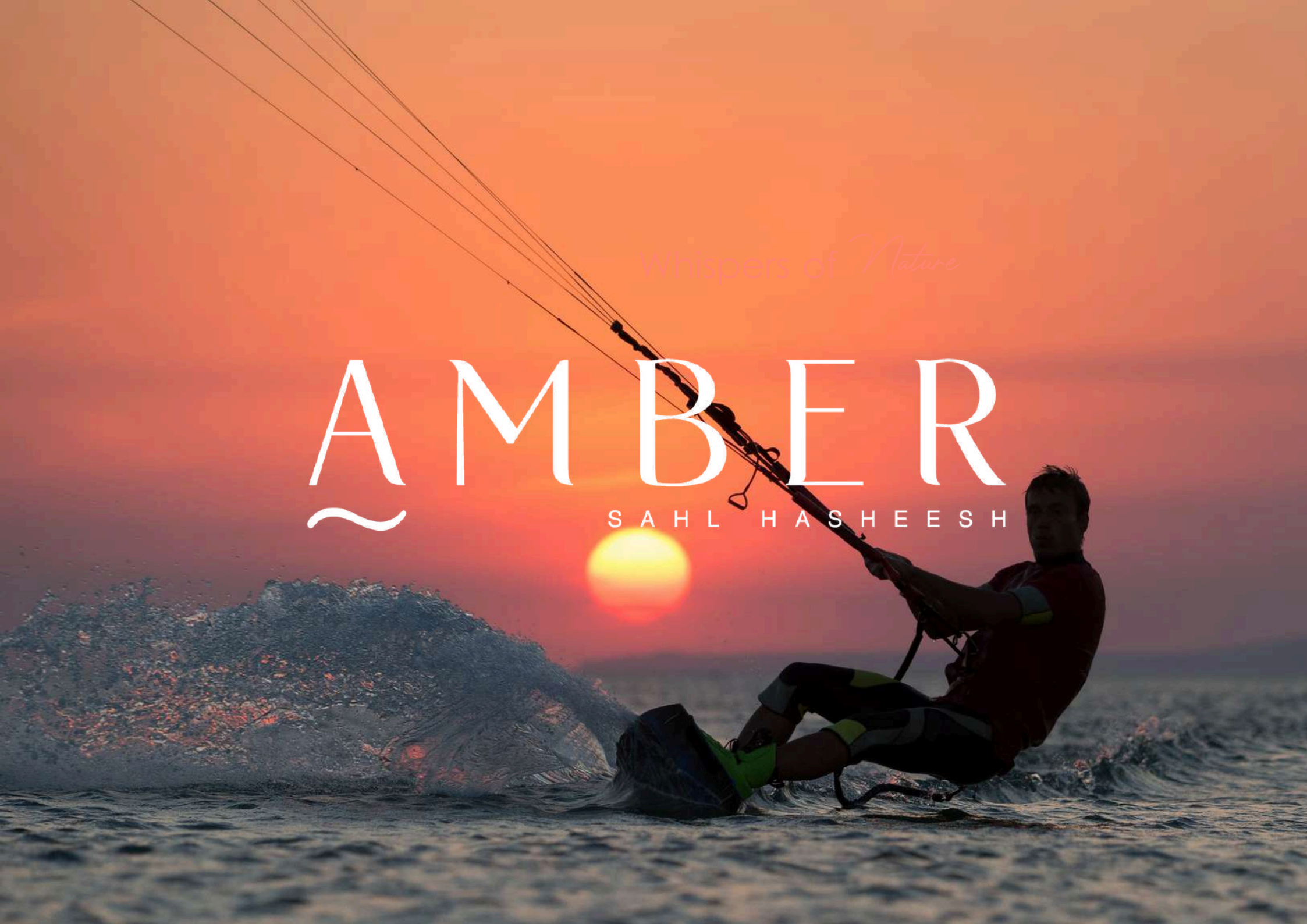




Whispers of Nature

AMBER

SAHL HASHEESH



About **AMBER**

SAHL HASHEESH

Amber, the dazzling new phase in il Bayou Sahl Hasheesh, is here to radiate energy, warmth, and a vibrant sense of community!

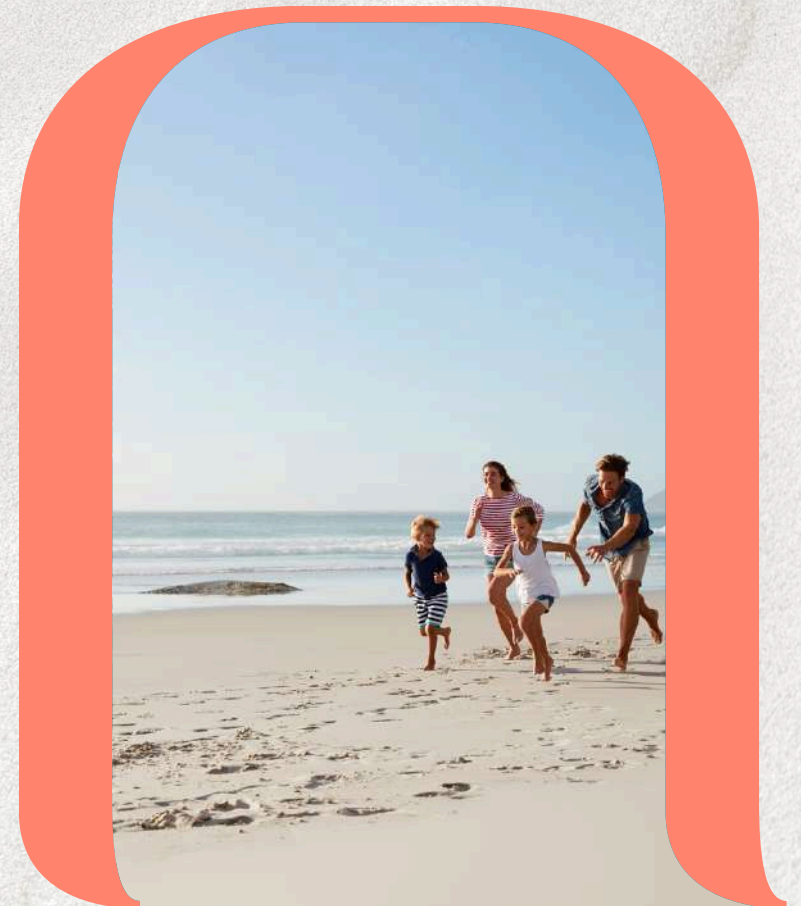
Inspired by the fiery, golden-orange hues of amber, this phase brings to life a dynamic atmosphere where every moment buzzes with excitement and charm.

Amber offers a stunning selection of townhouses, twin houses, and chalets, all thoughtfully designed to blend sophistication, vitality, and tranquility. These residences boast breathtaking views and modern layouts, redefining the essence of upscale coastal living.

At its heart lies a beautiful communal pool, a vibrant hub surrounded by lush greenery and lively spaces. Whether you're diving into spirited activities, enjoying a serene moment with neighbors, or simply soaking up the picturesque scenery, Amber creates a haven for every lifestyle.

Adding a playful twist, Amber introduces interactive splash pads a special treat for families and those seeking a fun, refreshing escape. These water features infuse the community with energy and ensure endless joy, especially for the little ones.

Get ready to feel the pulse of true coastal living!











L35 INTERNATIONAL ARCHITECTURE FIRM

When choosing our partners, we always put your needs as our main essence in every step we take; that's why we chose an international firm that guarantees excellence in the design from a perspective of creative freedom, coupled with technical thoughtfulness and the capacity to master all stages of the project from initial sketches to the finished building.

L35 is an international architecture firm with offices in Barcelona, Madrid, Paris, Milan, Geneva, Miami, Mexico, Bogota, Sao Paulo, Santiago, Istanbul and Abu Dhabi.

Masterplan



Interiors & Finishing



Interiors & Finishing



Chalets **Street Facade**
Type 1



Chalets **Main Facade**
Type 1



Chalets **Ground Floor Plan**

Type 1



Gross Area 139

Gross Area 112

Gross Area 112

Gross Area 139

Chalets **First Floor Plan**

Type 1



Gross Area 133

Gross Area 116

Gross Area 113

Gross Area 174

Chalets **Second Floor Plan**

Type 1



Gross Area 133

Gross Area 113

Gross Area 111

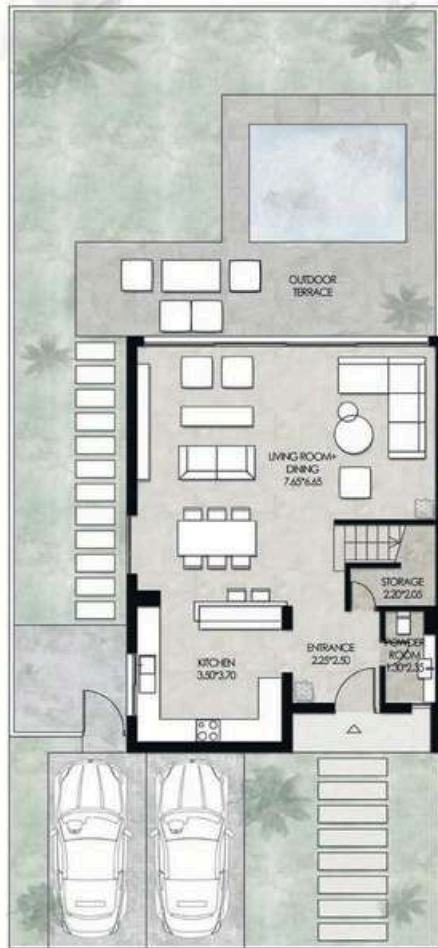
Twinhouse / Townhouse
Street Facade



Twinhouse / Townhouse
Main Facade



Corner Townhouses/ Twinhouses Floor Plans



Ground Floor Plan



First Floor Plan



Second Floor Plan

Total Internal Area: From 177 to 212 m²

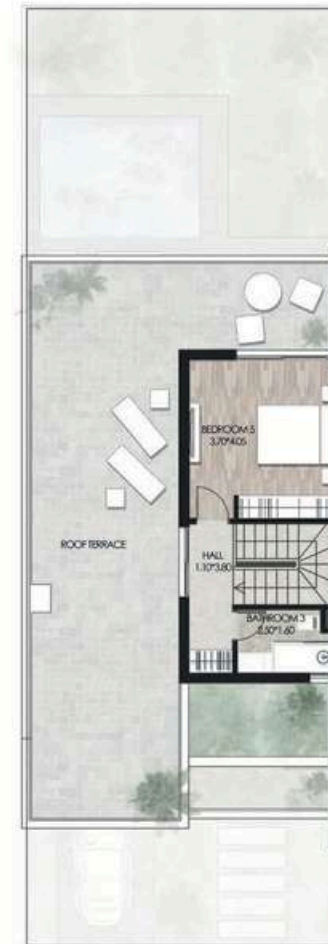
Mid Townhouses Floor Plans



Ground Floor Plan



First Floor Plan



Second Floor Plan

Total Internal Area: From 176 to 210 m²

Whispers of *Nature*



Disclaimer:

- 1- The Masterplan is an artist impression, Actual product may vary.
- 2- All materials and drawings are approximate, information is subject to change without notice.
- 3- The Developer reserves the right to make revisions and changes accordingly.

AMBER

~

SAHL HASHEESH

16170

www.tld-eg.com

thelanddevelopers.eg

TLD - The Land Developers

SI B - 3rd Floor, Downtown Kattamya, New Cairo

AG6, Old Town, Sahl Hasheesh, Red Sea

